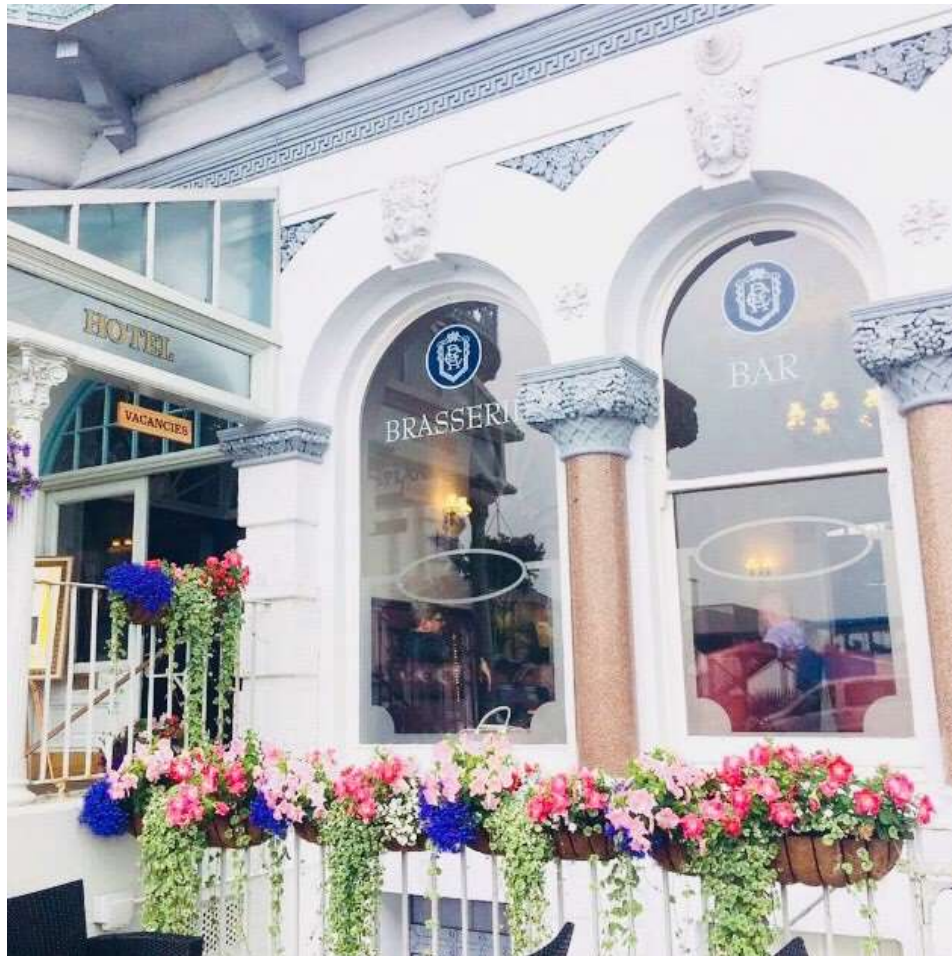




THE ROYAL ESPLANADE

Corporate Meetings & Hospitality



**The Royal Esplanade Hotel
16 Esplanade
Ryde
Isle of Wight
PO33 2ED**

T: 01983 562549 E: info@royalesplanadehotel.co.uk

**A warm welcome awaits you at
The Royal Esplanade Hotel**

Corporate Meetings and Hospitality

At the Royal Esplanade Hotel, we understand that not every conference or business meeting is the same, that's why we have put together a range of flexible packages to meet even the toughest of briefs.

From intimate to extravagant, traditional to unique, we can accommodate your corporate meetings and function requirements. The historic environment is perfectly complimented by its range of flexible character rooms which can all cater for 24hr, full day or half day packages.

The hotel offers overnight accommodation from just £60 for two persons on a bed & breakfast basis and offers an excellent variety of facilities in an impressive historic setting.

Whilst the hotel doesn't have its own parking facilities there is extensive public parking in a public car park opposite and on street parking adjacent to the hotel.

Please see the information provided below and then why not give our Hospitality Manager a call for an informal chat on 01983 562549 or email: customerservice@royalesplanadehotel.co.uk



**Our flexible range of prices for
Your Corporate Event**

Room Hire Only

- Full Day Room Hire – Week Days £200
- Full Day Room Hire – Saturday/Sunday £250
- Half Day Room Hire – Week Days £100
- Half Day Room Hire – Saturday/Sunday £150

Flexible Packages and Optional Extras

Additional Catering

Breakfast rolls with condiments	£3.50 per person
Danish Pastries	£3.50 per person
Fruit scones, cream & preserves	£3.95 per person
Tea or Coffee	£2.50 per person
Slice of Cake	£3.00 per person
Sandwich Platter	£40.00 per platter
Jugs of Fruit Juice	£7.50 per jug
Jugs of Fruit Squash	£3.50 per jug

Additional Equipment – cost per day

Flipchart and Pens	£10.00
--------------------	--------

PACKAGE RATES

Breakfast Meeting - £9.50 per person

- Room Hire 8am – 10am
- Chilled water on tables
- Tea and Coffee on arrival
- Breakfast roll
- A4 Conference pads and pencils
- High speed WI-FI

Half Day Delegate Rate - £14.95 per person

- Half Day Room Hire – up to 4 hours
- Chilled water on tables
- A4 Conference pads and pencils
- Flipcharts and pens
- High speed WI-FI
- Tea and Coffee with biscuits on arrival

- **Full Day Delegate Rates – from £35 per person**

Conference

- Room Hire 9am – 5pm
- Chilled water on tables
- A4 Conference pads and pencils
- Flipchart and pens
- High speed WI-FI
- Tea and Coffee on arrival
- Mid-morning tea and coffee with biscuits
- Corporate buffet lunch
- Afternoon tea and coffee with cake

24hr Day Delegate Rates

Our 24hr Delegate rate is an all-inclusive package offering you overnight accommodation to include breakfast, full meeting room facilities and a sumptuous 3 course evening dinner for all your delegates.

24hr Delegate Rates – from £129 per person

Conference

- Room Hire 9am – 5pm
- Chilled water on tables
- A4 Conference pads and pencils
- Flipchart and pens
- High speed WI-FI
- Tea and Coffee on arrival
- Mid-morning tea and coffee with biscuits
- Corporate buffet lunch
- Afternoon tea and coffee with cake

Dinner

- Glass of prosecco on upon arrival
- 3 Course Dinner
- Tea and Coffee with After Dinner mints

Accommodation

- Overnights stay in a Premier Twin or Double room
- Full English breakfast

Corporate buffet lunch

The Corporate buffet lunch menu is included in our full day & 24hr delegate rate.

It is also available to purchase separately should you wish to add guests for lunch only.

Corporate lunches can be served either in your meeting room if you wish to have a working lunch, or you may eat in Harry's Brasserie with views looking out onto the Esplanade.

For groups smaller than 6 people the Brasserie lunch menu may be offered as an alternative and a pre-order taken at morning coffee.

We are more than happy to cater for any dietary requirements so please inform your events contact of these at the booking stage.